

Nicotra Group
Art Collection

Nicotra Group
Art Collection

INTRODUCTION



“Hoteliers and real estate developers Lois and Richard Nicotra, owners of the Hilton Garden Inn, Hampton Inn & Suites and the Nicotra Group, are pleased to have curated an exquisite art and sculpture collection throughout their hotels, office buildings and grounds of The Corporate Park of Staten Island.

The unique and extensive collection showcases the works of many talented artists from around the world in a wide variety of mediums. The Nicotras are thrilled to share these transcendent pieces with their Staten Island community and visitors alike.”

“OUR CAMPUS IS OUR CANVAS.” – Lois and Richard Nicotra

HILTON GARDEN INN

WE WASTE NO TIME AT ALL

LEON BRONSTEIN

This abstract bronze figure by Leon Bronstein is nestled amongst the landscaping at the entrance to Above, a perfect place to get married. This large, volumetric, elongated sculpture of an embracing relationship interacts with nature. The Israel based artist describes his work as “elegant forms that appear to move like branches on a tree or blades of grass in the wind.”



WE WASTE NO TIME AT ALL



MAN AND HIS DOG

MAN AND HIS DOG (RICHARD AND LORENZO)

BOAZ VAADIA

The talented Boaz Vaadia was an American/Israeli figurative art sculptor known for working with bluestone slate. This local artist, whose studio was located in Williamsburg, Brooklyn, has his famous sculptures on public display throughout America and as far as Tel Aviv, Israel. Vaadia's unique style of work was inspired by forces of nature such as the natural formation of stones in the earth.

In his work he explores the primal connection of man to mother earth. This sculpture, also known as *Richard and Lorenzo*, after owner Richard Nicotra and his beloved Maltese, Lorenzo, graces the entrance to Lorenzo's Restaurant Bar & Cabaret. This sculpture's sister piece is displayed at the entrance to the Time Warner Building in New York City.



SKY IS THE LIMIT

SKY IS THE LIMIT TOLLA INBAR

Tolla Inbar is an Israeli sculptor well known throughout the world for her whimsical and spiritual bronze art. Tolla studied sculpture, photography, drawing, and graphics at the Avni Institute of Arts and completed a B.A. in Psychology and Sociology at Tel Aviv University. Her advanced education and knowledge of human behavior is evident in the unique features of her work.

Tolla's sculptures and ceramics circulate exhibitions and galleries around the world. "All of my art conveys a special meaning," the artist explains, "The mental and physical satisfaction following the achievement of elegant design is a major motivation, but the relentless drive to create different expressions of the human spiritual quest for the divine invokes even greater satisfaction."

Sky Is The Limit, located just to the right of the Hilton Garden Inn entrance, is typical of Tolla's aesthetic and promotes an inspirational message of perseverance and success to all its viewers. It's sister piece is located in the Museum of Liberty in Philadelphia

NICOTRA'S BALLROOM

PEGASUS

TOLLA INBAR

This is the second sculpture by Israeli artist Tolla Inbar in the Nicotra's collection. This abstract equestrian monument is located in the Nicotra's Ballroom Pre-function area. The artist explains, "I have a special love for the animal world and nature, the beauty of the world. My animal sculptures are therefore humorous and human in one, expressing an uncomplicated perspective on life."



PEGASUS



JOY OF MUSIC

JOY OF MUSIC

GEORGE W.H. LUNDEEN

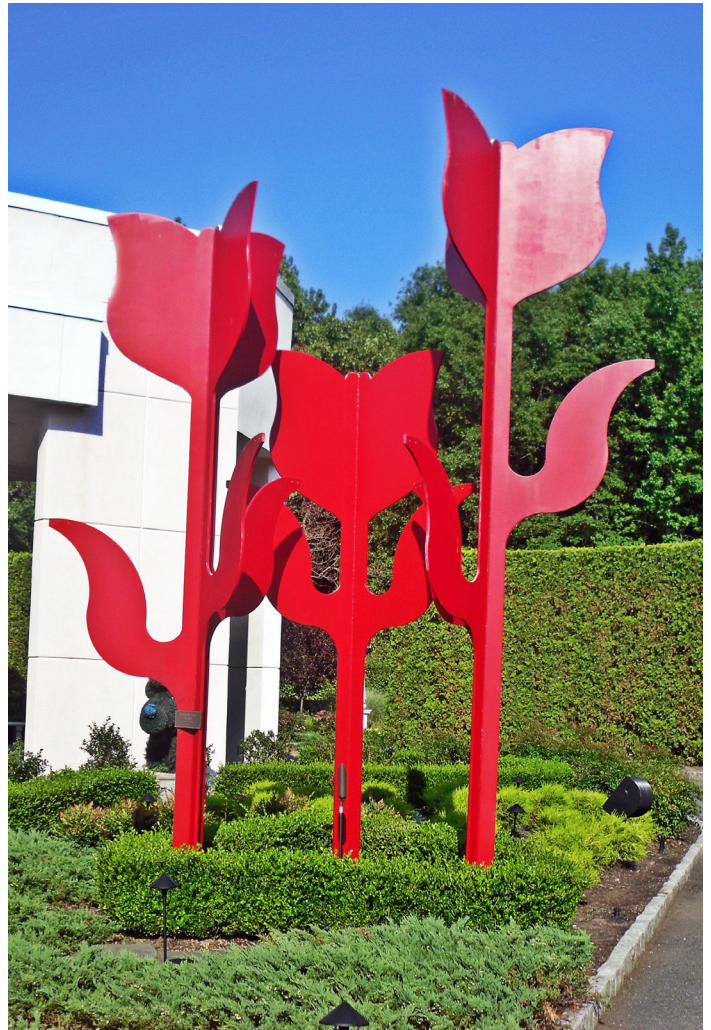
This sculpture by American artist, George Lundeen, is composed of five life-size musicians cast in bronze. It is one of only 21 editions of private and public art on display across the country. Gracing the entrance to Nicotra's Ballroom, this whimsical artwork gives guests a preview for what is to come inside the ballroom. Lundeen's sculptures are artfully arranged in front of a background that is an art piece in itself. The laser-cut sheet metal backdrop is a swirling image of sheet music of Vivaldi's "Four Seasons."



EMBRACE

EMBRACE ISRAELI ARTIST

A modern sculpture that stands 11½ feet tall amidst the greenery, *Embrace* is a favorite photo spot for brides and grooms celebrating their special day at the Hilton Garden Inn.



RED TULIPS

PARK AVENUE TULIPS EDWINA SANDYS

“Lois and I saw these tulips on the Park Avenue median in Manhattan and we found out the artist was Edwina Sandys, who is Winston Churchill’s granddaughter. This is an important piece because we endeavor to make South Avenue the Park Avenue of Staten Island” explains Richard Nicotra. These vibrant, 12-foot tall painted aluminum tulips grace the entrance of Nicotra’s Ballroom.



FAITHFUL



PRECIOUS

FAITHFUL (LEFT) & PRECIOUS (RIGHT) STEPHEN SCOTT YOUNG

Lois and Richard Nicotra are proud to display two watercolors by the famous American artist Stephen Scott Young.

The Florida artist is among the top watercolorists in the country. He is known for his vibrant paintings that capture social issues and everyday life on the southeast coast of the United States, as well as, the Bahamas. Young uses an intense contrast of color to express the very essence of human beings in his works. Stephen Scott Young's famous trademark quickly became portraying black figures against a light background. The girl posing in *Precious* was a frequent model of his. Young used the proceeds from the sale of this painting to send her to school.

The watercolor entitled *Faithful* is notable because centered within the painting is a watermark, a miniature exact replica of the painting itself, making this artwork truly unique.



MIRANDO TU INTERIOR

MIRANDO TU INTERIOR MARIA LUISA CAMPOY

This abstract sculpture was created by Maria Luisa Campoy, a Spanish contemporary artist. Its title translates to *Looking Inside of You*. Situated at the entrance to the beautiful glass-walled Tea House Garden, this 40-inch tall bronze sculpture begs the question, "which is the mirror image?"



GAZEBO FLORENCE, ITALY

The Nicotras commissioned this intricate wrought iron and glass gazebo made in Florence, Italy to serve as a romantic oasis for their guests and brides. Lois and Richard Nicotra are dedicated to bringing the authentic craftsmanship they fell in love with in Italy to their property on Staten Island.

When this beautifully ornate work of art arrived from Italy, the Nicotras also brought several skilled Florentine craftsman to Staten Island for custom installation. A centerpiece of the Great Lawn, this ornate open-air gazebo provides the perfect setting for wedding ceremonies.

RENAISSANCE STYLE LAMPPOSTS NERI

Adding a magical glow to the Trevi Garden are four opulent Renaissance style lampposts, handcrafted by the world famous Italian company Neri, whose lighting can also be found at the Louvre in Paris, Central Park in New York City, and in Moscow's subway stations. When on a trip to Venice, Italy, Lois and Richard Nicotra were mesmerized by the romantic lighting in the world famous Piazza San Marco and decided to incorporate the beautiful designs into their piazza inspired event space. They went to great lengths working with the Italian government to commission the same lampposts found in Venice and even flew in Italian craftsmen to install the cobblestone flooring.



LORENZO'S RESTAURANT, BAR & CABARET

SCULPTURE NANCY MEE

Nancy Mee is an American visual artist known for her Zen-like glass sculptures. Mee has honed her skills studying under the famous glass master Dale Chihuly. Mee draws inspiration from mythologies around the world and reflects on universal truths, incorporating their essence into her works.

She specializes in slumped and sandblasted glass with cut and cast metal and stone accents.

The Nicotras showcase their fused Nancy Mee glass-work on steel in Lorenzo's Bar. The icy green fused glass forms an elegant and mysterious shape illuminated by the mood lighting.



RAZZMATAZZ & CABARET HOWARD JASON

American artist Howard Jason has been working professionally as a sculptor since 1989. Jason was influenced at a young age by his father Mario Jason, a world-renowned sculptor. Following his graduation from Otis Parsons Art Institute and postgraduate study at the Pasadena Art Center, Jason began working alongside his father in the foundry he built in Los Angeles. Jason has become famous for his highly detailed bronze sculptures of children, jazz and ballet dancers. His work is currently showcased in many fine national and international galleries. On display in Lorenzo's Bar are two Howard Jason dancers very suited for the atmosphere entitled *Razzmatazz* and *Cabaret*. These romantic figurative sculptures not only express passion and sensuality, but also freedom of movement.



RAZZMATAZZ



CABARET



MUSIC

MUSIC & IL VAGABONDO YOLANDA ANTAL

Israeli Artist Yolanda Antal combines her love of sculpting and painting by using an innovative technique of hand painting on bronze sculptures. She is greatly influenced by her surroundings, which include the desert, rocks and the sea, approached with a realistic and classical touch. Many of her sculptures feature women stereotypes taken from stories in the bible, from mythology and legends, depicted as modern and contemporary figures. On display in the lobby of the Hilton Garden Inn are two of her sculptures titled *Music* and *Il Vagabondo*.



IL VAGABONDO



BOBBY SHORT'S PIANO STOOL

Bobby Short was a famous American pianist and cabaret singer best known as the pianist at the world famous Carlyle Hotel and for jetting around the world with Gloria Vanderbilt. This piano stool and several other artifacts on display were acquired at the auction of his estate. Lois and Richard Nicotra proudly display this famous piece on the stage in Lorenzo's Restaurant Bar and Cabaret.

OIL COLLECTION

BILL JONAS

When American artist Bill Jonas was producing his colorful paintings in New Orleans, Lois and Richard Nicotra purchased this four-piece collection in an effort to support the victims of Hurricane Katrina. Bill Jonas donated the proceeds from this purchase to Katrina relief foundations. Lois and Richard Nicotra also organized a fundraiser in Nicotra's Ballroom, raising more than \$400,000, which was sent to New Orleans. Through oil painting, Jonas uses brilliant colors to portray the human figure universally. He is famous for depicting androgynous women and men in his trademark surreal, playful and very entertaining style. This important collection can be found at Lorenzo's where the subject matter of elegant men and women dining, dancing and singing perfectly fit the atmosphere.



CLUB MOZAMBIQUE



MOZAMBIQUE LOUNGE



MRS. G ARRIVES



GIRL SINGER



LORENZO

LORENZO SCOTT LOBAIDO

Scott LoBaido, a local Staten Island artist, is not only known for his patriotic artwork but for his generosity and love for his community. After learning about the passing of Lois and Richard's beloved 18 year old Maltese Lorenzo, Scott painted a heartwarming and poignant portrait as a surprise tribute. The portrait is displayed in a prominent spot in Lorenzo's Restaurant, Bar & Cabaret, which was named after Lorenzo when he was just a pup.

This special portrait of *Lorenzo* incorporates the colors red, white and blue to add a patriotic flair to the work. When you look at this painting you not only remember Lorenzo, capturing his soul, but recognize the signature style of Scott LoBaido.



AMERICAN FLAG

AMERICAN FLAG SCOTT LOBAIDO

This *American Flag* painting, indicative of LoBaido's trademark patriotic works, can be found in the Fireplace Nook in the Lobby Lounge. In addition to paintings and sculpture, LoBaido uses his artistic ability to restore buildings vandalized by graffiti with patriotic murals. His greatest creative accomplishment thus far is "Flags across America." LoBaido drove across the United States, in 10 months, painting large scale American flags on one rooftop in each of the 50 states. His goal was to ensure that soldiers flying home from war would look down and see an American Flag celebrating their safe return.

POTTERY

1. From Canada
2. Nadeige Choplet from France
3. From Venice
4. From Canada
5. & 6. From Cape May, NJ
7. Terrecotte Artistiche Pientine di Sbarluzzi Piero (Pienza, Italy)



1

3

2



4

6

5



7

LOBBY LOUNGE

PORTRAITS

ITZCHAK TARKAY

Itzhak Tarkay is an influential Israeli figurative artist known for his whimsical use of vibrant colors. Tarkay studied at the Avni Institute of Art in Tel Aviv, and is thoroughly grounded in European artistic traditions. Tarkay received recognition at the International Art Expo in New York in 1986 and 1987 for works in several forms of media, including oil, acrylic and watercolor. Today, Tarkay is considered “one of the most influential artists of the early 21st century” by art critics and has inspired many artists throughout the world with his contemplative depiction of the female figure. A series of three of Tarkay’s signature portraits are on display in the Lobby Lounge.





UNTITLED

PETER MAX

Peter Max is a German-born American illustrator and graphic artist. He is world famous for his use of psychedelic shapes and vivid color palettes. Max has portrayed everyone from the Dalai Lama to the Beatles with his whimsical, “cosmic style”. His work has been seen everywhere from the banner celebrating City Hall’s centennial in 2001 to the hull of a cruise ship, and a Boeing Airline fuselage. Max’s mixed media works can be found in the collections of six past United States Presidents. His signature artwork has been used to represent five Super Bowls, the World Cup, the World Series, the U.S. Open, the Grammys, and the Rock and Roll Hall of Fame.

BLACKFOOT & SIOUX

GREGORY PERILLO

Gregory Perillo is a renowned American Western artist from Staten Island. His powerfully dramatic, emotional depictions of Native Americans and early settlers, as well as Western landscapes and wildlife have made him one of America's leading painters and sculptors.

Two graphite works of Native Americans by the artist are displayed in the Lobby Lounge.



SIOUX



BLACKFOOT



RED ROSE

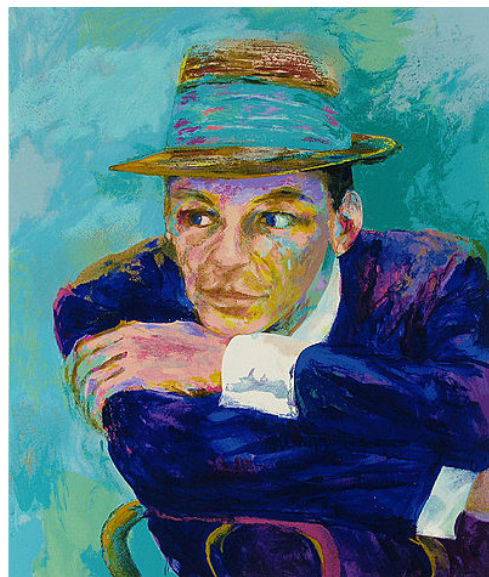
RED ROSE

DEBORAH BIGELEISEN

Deborah Bigeleisen is a contemporary artist from West Palm Beach, Florida. This vibrant *Red Rose* oil on canvas painting is part of a greater collection of rose artworks. Bigeleisen is famous for using a single image of a flower as her inspiration and immortalizing its life at the peak of its natural beauty.

FRANK SINATRA - THE VOICE

LEROY NEIMAN



FRANK SINATRA - THE VOICE

World famous American artist, LeRoy Neiman, is known for his brilliantly colored, expressionist paintings and screen prints of athletes, musicians, and sporting events. His work is in the permanent collections of the Smithsonian, the Whitney Museum, the Brooklyn Museum, the Museum of Fine Arts in Boston, the State Hermitage Museum in Russia, and Wadham College at Oxford. Neiman had a long personal relationship with Frank Sinatra and portrayed him in his artwork many times. This vibrant print of the famous performer is part of a limited edition collection signed by the artist. The portrait was specially commissioned for the cover of the Frank Sinatra album, "Classic Duets".



PORTRAIT OF JOHN NOBLE

PORTRAIT OF JOHN NOBLE

BILL MURPHY

This portrait of artist John Noble was sketched by local artist Bill Murphy. Born on Staten Island in 1952, Murphy attended public school here and later studied at Brooklyn College, The School of Visual Arts, The Art Students League and Vermont College. He has taught on Staten Island since 1984 and is currently Associate Professor of Art. Murphy is well known for his art representing Staten Island and the New York Harbor.

His patriotic work is featured in collections throughout the country including the Library of Congress. This *Portrait of John Noble* pays homage to the artist that most influenced his work.

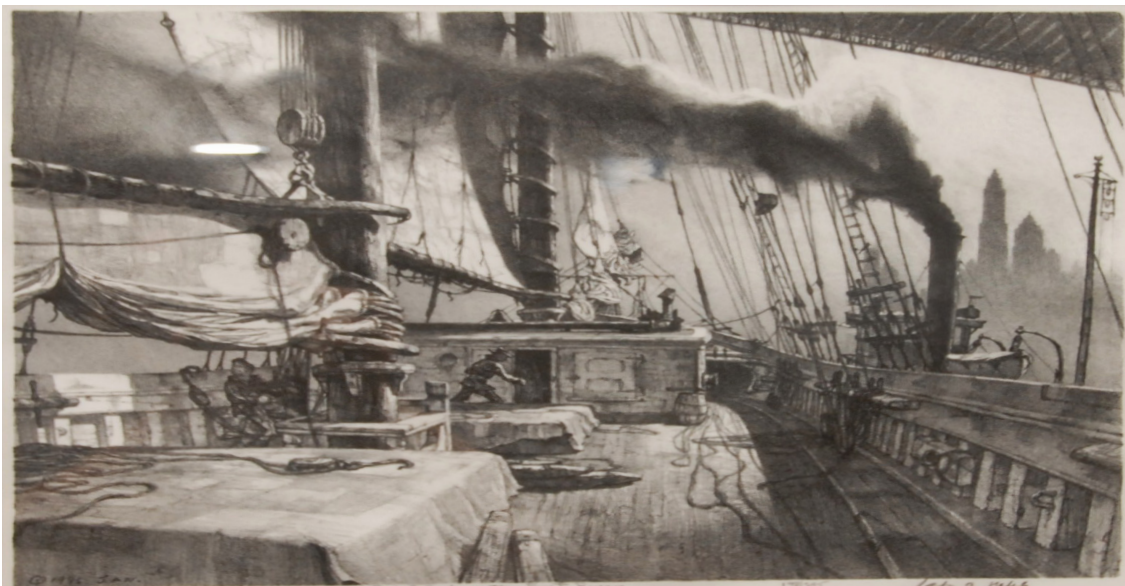


A GREASE PENCIL FROM
JOHN A. NOBLE'S
"PENCIL JUG"

UNTITLED

JOHN A. NOBLE

Born in Paris in 1913, John A. Noble was the son of the noted American painter, John "Wichita Bill" Noble. In 1919, Noble made the voyage to America. His time on the sea had great significance to him and foreshadowed his life's work. Noble wrote, "Anywhere men work or build on the water is of interest to me... My life's work is to make a rounded picture of the American maritime endeavor of modern times." Many of Noble's works are on display at Snug Harbor Cultural Center on Staten Island in their Noble Maritime Collection. This piece is one of Noble's many drawings in which he chronicled 20th century working ships and the New York Harbor.



THE BUSINESSMEN

UNKNOWN

At 5 ½ feet tall and 3 feet wide, this painted sculpture came all the way from India. What makes it such a unique piece is the fact that it is made from papier-mâché.



PORTRAIT

EARLY PORTRAIT

HENRI MATISSE

Henri Matisse was a world-renowned French artist, known for his use of color and his fluid and original draughtsmanship. Born in 1869, Matisse is commonly regarded along with Pablo Picasso, as a leading figure in modern art. The Nicotras are thrilled to share this rare original early work with their guests and community.

Matisse's early work actually reflected the style of his predecessors and the rigid nature of his education at the Académie Julian and the École des Beaux Arts in Paris.

Soon however, Matisse began experimenting with new styles, quickly finding his own artistic voice. He was a central figure in the Fauvist movement; a style characterized by bright, intense colors and bold brushstrokes that were not restricted to the confines of naturalistic interpretation. Matisse also excelled in Cubism, and other aspects of abstract expressionism, working in numerous media throughout his career including painting, drawing, sculpture, decoupage, and graphic works. Matisse enjoyed a prolific world famous career, creating works with a continuously developing style.

In Matisse's time, when artists started their careers they would often paint portraits to make ends meet as wealthy families commissioned portraits frequently.



THE BUSINESSMEN

PUBLIC ART OF THE CORPORATE PARK OF STATEN ISLAND

ROBERT ST. CROIX

World- renowned American sculptor Robert St. Croix has created many special artworks for Lois and Richard Nicotra. His sculptures are displayed throughout the Nicotra's properties. The Nicotras first encountered St. Croix's work while in Florida where the artist has a studio in West Palm Beach. They fell in love with the extremely naturalistic life-size bronze sculptures St. Croix is so famous for and set about personalizing their properties by commissioning unique statues of friends and family.

SAM THE POSTMAN

ROBERT ST. CROIX

Lois and Richard Nicotra personally commissioned this life-size painted bronze for the lobby of their 1110 South Avenue corporate headquarters. This whimsical replica of the couple's dear friend, Sam Stein, here portrayed as a postman, joyfully greets all that walk into the Nicotra Group Headquarters. Many visitors have commented that at first glance they thought the sculpture was a real man - a testament to the naturalism in St. Croix's work.



SAM THE POSTMAN

CHILDREN AT PLAY

ROBERT ST. CROIX

To decorate the grounds of the Kiddie Academy, the Corporate Park's day care center, Lois and Richard Nicotra chose this jovial bronze representation of children at play.





ROSALEEN LOOKING AT HIM



JIM LOOKING BACK AT ROSALEEN

ROSALEEN LOOKING AT HIM

ROBERT ST. CROIX

This life-size bronze interacts with the *Jim Kelly* sculpture on the steps of the 1000 South Avenue office building. Jim, with his briefcase and cell phone, and *Rosaleen* with her newspaper engage each other creating a whimsical business atmosphere at this corporate workplace.

WE PLEDGE ALLEGIANCE

ROBERT ST. CROIX

This breathtaking patriotic bronze sculpture is located on the grounds of 900 South Avenue. In September of 1999, Lois and Richard Nicotra dedicated this moving sculpture to the honor and memory of Staten Island Veterans and in a special loving memory of Corporal Michael (Uncle Mike) S. Barletto. Every Veterans Day, the Nicotras host a commemorative ceremony and breakfast to thank our veterans for protecting our country and fighting for our freedom.



WE PLEDGE ALLEGIANCE

THE SPIRIT OF 9/11

GREGORY PERILLO

This larger-than-life bronze tribute to the victims of 9/11 by Staten Island artist Gregory Perillo is truly awe-inspiring.

In *The Spirit of 9/11*, Perillo signifies the “past”, the “memory” and the “future”. The “past” is represented by the structure of the World Trade Center in the background of the sculpture. The adult in the center represents the “memory” of the 270 victims who died on 9/11 and all the heroes involved. The children represent the “future”. The artist Perillo explains, “the children, a soccer player and a baseball player, hand the game ball to the “spirit” as if to say ‘We are the future and you will never be forgotten.’”



THE SPIRIT OF 9/11

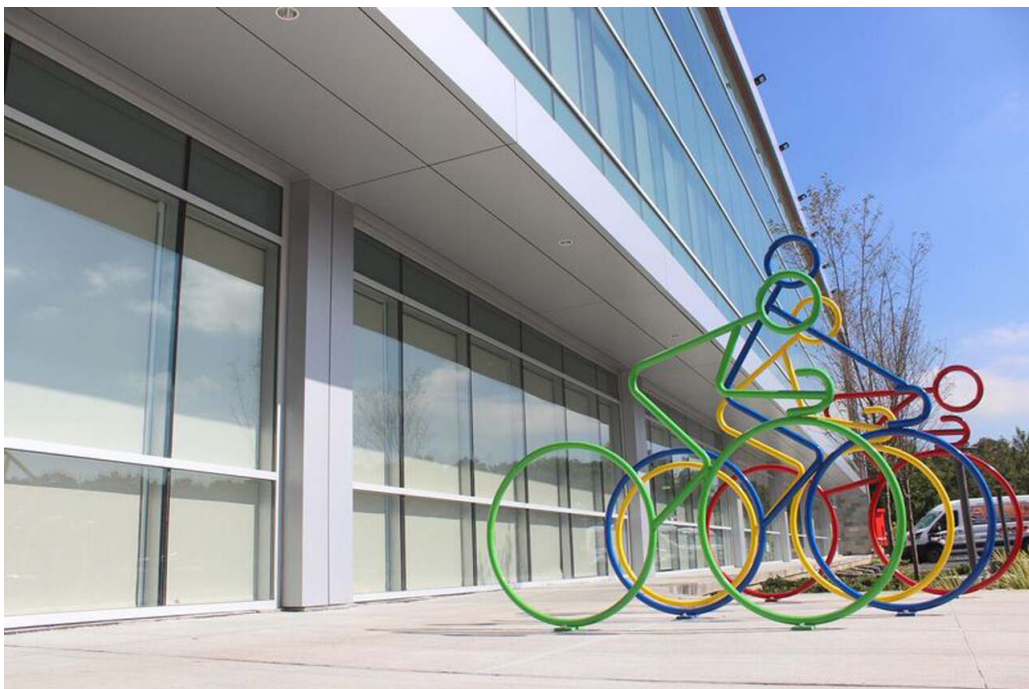


SCREEN SCULPTURE

DAVID HAYES

David Hayes was a famous American modern artist whose work is permanently on display in over 100 institutional collections across America. Early in his art career, Hayes studied under modernism's sculptural leader David Smith, whose iconic colored steel geometries greatly influenced his work. Hayes began his screen sculpture series in 1976. Made of painted black steel, these works consist of numerous, relatively small, and variously shaped flat forms stacked to compose a predominantly singular plane.





ACCELERATION

ACCELERATION

SCOTT VAN CAMPEN

Acceleration is comprised of four colorful pieces of art, shaped like bicycles in perpetual motion that doubles as a bike rack to comply with New York City's building code in a uniquely Nicotra fashion. Richard Nicotra noted "the city told us we need to have bike racks on the property, but we wanted to create something that was not only functional, but beautiful. Scott Van Campen of Staten Island MakerSpace immediately understood the concept and presented us with several sketches. We are extremely happy to work with a local, Staten Island artist to create this piece."



ASCENSION

ASCENSION

SCOTT VAN CAMPEN

A large blue and yellow abstract sculpture, *Ascension* is made of $\frac{3}{8}$ th of an inch steel plate. It stands 12½ feet tall and weighs 1,600 pounds. When creating this sculpture, Scott Van Campen of Staten Island Maker Space knew it would be gracing the entrance of a medical facility so he wanted to create an uplifting piece.

BLOOMFIELD CONSERVANCY

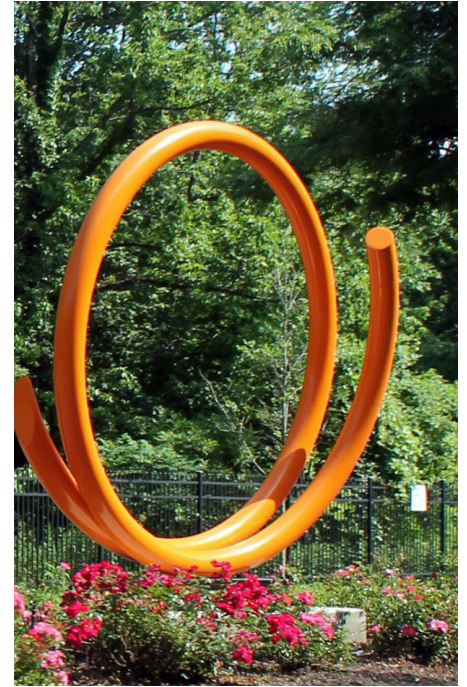
One of Lois and Richard Nicotra's main goals is to create a beautiful and stimulating environment for their guests, employees and their community. The Nicotras established the Bloomfield Conservancy in 1998, a not-for-profit corporation to maintain and preserve the wetlands within the Corporate Park of Staten Island and maintain and beautify the public areas around the Corporate Park. The Nicotras collaborated with Councilman John Fusco to create a public-private partnership that would place fences and sidewalks along South Avenue as well as plant trees and flowers in the medians. The Nicotras expanded this project by meeting with the person who was in charge of the Park Avenue medians in Manhattan and the New York City Parks Department to learn more about public art installations. Public art offers a special experience to its viewers because it is intentionally staged in the physical public domain and is accessible to all. It was the Nicotra's vision that brought public art to the Corporate Park of Staten Island

JOHN CLEMENT

John Clement, a Brooklyn, NY based artist transforms utilitarian materials into monumental yet whimsical gravity-defying forms. Clement's famous steel sculptures are on display throughout North America and East Asia and now along South Avenue in Staten Island. Clement's enormous installations are usually a form of public art. Lois and Richard Nicotra are proud to offer Staten Islanders this unique public art as they beautify their community.



ORANGE BLOSSOMS
JOHN CLEMENT



ORANGE BLOSSOMS

This abstract collection of brightly painted steel sculptures by John Clement can be found along the South Avenue median running through the Corporate Park of Staten Island. Lois and Richard Nicotra hope that these bursts of color bring joy to everyone traveling through the neighborhood.

BIG YELLOW JOHN CLEMENT

Big Yellow is one of Clement's signature pieces that conveys his creative energy, joy, playfulness and optimism. Clement wants you to see his work, recognize the vibrant colors and take a minute out of your day to experience life directly and physically. You can find Big Yellow outside the Nicotra's Hampton Inn & Suites.



BIG YELLOW

MOOSE ON THE LOOSE

FREDERICK PRESCOTT

Life and art join to reveal a dynamic partnership in the work of Frederick Prescott. The joy and animation seen in Prescott's sculptures simultaneously evoke the natural world and it's imaginary counterpart. As graphically bold as his pieces are, they always look perfectly at ease in a natural setting. Prescott's *Moose on the Loose*, feels at home nestled near the fir trees near the entrance to the Hilton Garden Inn and exemplifies the half-real, half-fantastical images that have become Prescott's trademark. When *Moose on the Loose* arrived it was a dark metal color, and Lois Nicotra had it painted the vibrant yellow you see today. On a windy day, you may see *Moose's* head bobbing up and down ever so slightly.



MOOSE ON THE LOOSE



KEY AND KEYHOLE

KEY AND KEYHOLE

DAVID TANYCH

Intrigued and inspired by the strength and flexibility of steel, Vermont based sculptor David Tanych who began his career as a home and furniture builder, has turned his interest in design from functional and practical to imaginative and artistic. Tanych specializes in creating huge outdoor metal sculptures, that when complete, are acid etched, allowing them to rust. Lois and Richard Nicotra first spotted *Key and Keyhole* in a vineyard in Napa Valley. The vineyard sustained minor damage during the recent California wildfires, but the hillside where the sculpture was placed was not affected. "The *Key and Keyhole* jumped out at us as a representation of finding the right fit – our team at the Nicotra Group is always working to find the right combination of development, tenants, landscape preservation, art and community involvement to keep the West Shore growing and working," shares Richard Nicotra.



XOXOX

ROBERT LORENSEN

XOXOX

“The *XOXOX* sculpture is a gift to our couples to give them the opportunity for a picture perfect moment where only hugs and kisses surround them,” shared Lois Nicotra. At 22 feet long and 6 feet high, prominently located on our Great Lawn, *XOXOX* contributes to Lois and Richard Nicotra’s focus of spreading ‘LOVE’ year round. Unveiled in February of 2018, the sculpture was created by Rob Lorensen and is made from aluminum with a vivid red urethane paint. “We built *LOVE* at the entrance of our property for our guests, brides and grooms, and the community alike, but *XOXOX* is a “private” something special for the couples who get married at Above or Nicotra’s Ballroom here at our Hilton Garden Inn,” stated Richard Nicotra.



LOVE

PATRICK WEISEL

LOVE

Just outside 1130 South Avenue the Nicotra Group, along with landscape architect and environmental designer, Patrick Weisel of Being Here Design, created a wonderful plaza with a fountain, seating area and a very special piece of iconic art. Lois and Richard Nicotra feel there is something missing from the world lately, so they commissioned a sculpture that stands 10 feet high and 40 feet long to remind Staten Island that what the world needs is more LOVE. “When you visit our hotels, you’ll see the word *LOVE* and maybe it will make you think a little bit”, Richard Nicotra added. The iconic *LOVE* sculpture was unveiled to the tune of Burt Bacharach’s “What the World Needs Now”. “Much of the desire Richard and I had for this space and the artwork stems from our wish that the world was filled with more peace, and that the borough we call home has the best art, flowers, medical facilities, hotels, office buildings and entertainment,” said Lois Nicotra. “We want the best for Staten Island, and Staten Island deserves the best.”

Hoteliers and real estate developers Lois and Richard Nicotra, owners of the Hilton Garden Inn, Hampton Inn & Suites and the Nicotra Group, are pleased to have curated an exquisite art and sculpture collection throughout their hotels, office buildings and grounds of The Corporate Park of Staten Island.

"Our campus is our canvas." - Lois and Richard Nicotra